

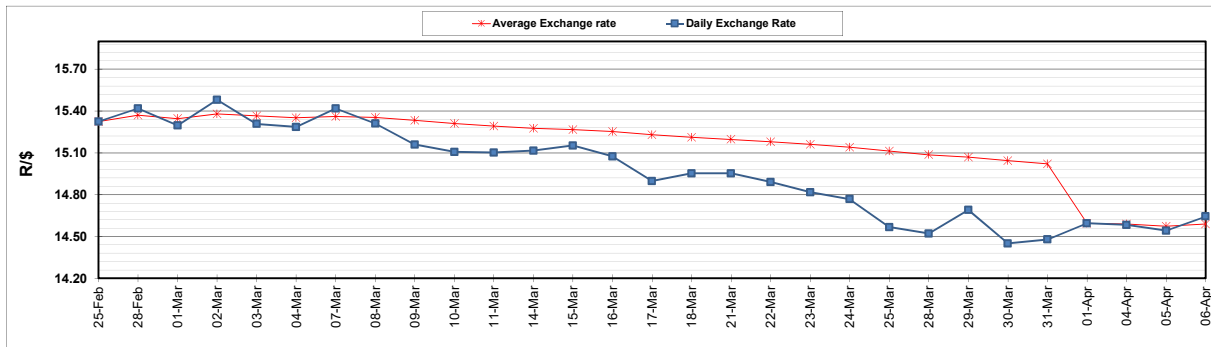
	PETROL 95 ULP	PETROL 93 ULP & LRP	DIESEL 0.05%	DIESEL 0.005%	ILL. PAR.
GAUTENG PUMP PRICE (SA c/l) AS FROM 06/04/2022	2,196.000	2,163.000	-	-	-
WHOLESALE PRICE (SA c/l) AS FROM 06/04/2022	-	-	2,101.440	2,123.840	1,584.688
SINGLE NATIONAL MAXIMUM RETAIL PRICE	-	-	-	-	2,045.000
BASIC FUEL PRICE - 07/04/2022 (SA c/l)	1,173.032	1,151.156	1,331.305	1,343.648	1,308.823
PRESS RELEASE CONTRIBUTION TO BFP 06/04/2022 - 07/04/2022 (SA c/l)	1,278.710	1,255.710	1,402.630	1,425.030	1,363.128
UNIT OVER/(UNDER) RECOVERY - 07/04/2022 (SA c/l)	105.678	104.554	71.325	81.382	54.305
AVERAGE BASIC FUEL PRICE 01/04/2022 - 07/04/2022	1,191.247	1,170.379	1,384.723	1,398.979	1,361.632
AVERAGE UNIT OVER/(UNDER) RECOVERY 01/04/2022 - 07/04/2022	(19.601)	(16.933)	(159.093)	(160.549)	(158.104)

### ANALYSIS MOVEMENT OF AVERAGE OVER/(UNDER) RECOVERY

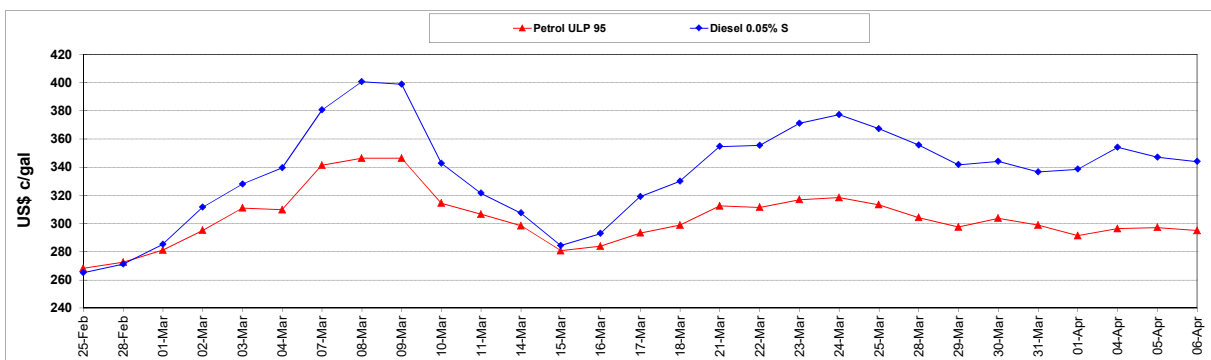
	PETROL 95	PETROL 93	DIESEL 0.05%	DIESEL 0.005%	ILL. PAR.
- MOVEMENT IN INTERNATIONAL PRODUCT PRICES	(52.475)	(49.232)	(197.307)	(199.156)	(195.681)
- MOVEMENT IN EXCHANGE RATE	32.874	32.299	38.214	38.607	37.577
AVERAGE UNIT OVER/(UNDER) RECOVERY 01/04/2022 - 07/04/2022	(19.601)	(16.933)	(159.093)	(160.549)	(158.104)

### R/\$ EXCHANGE RATE - (R/\$14.7268 - 07/04/2022)

#### EXCHANGE RATE USED IN BASIC FUEL PRICE



#### INTERNATIONAL PRODUCT PRICES OF BASKET USED IN BASIC FUEL PRICE



#### BASIC FUEL PRICE IN SA CENTS PER LITRE

